

Geo-Referenced Quality Control at Real Time

NIR-Crop Analyzer

The New On-Line NIR Grain Monitoring System for Combines



SOYBEAN

- Moisture= XX%
- Protein= XX%
- Oil Fat= XX%

WHEAT

- Moisture= XX%
- Protein= XX%

CORN

- Moisture= XX%
- Protein= XX%
- Oil Fat= XX%
- Starch= XX%

The NIR-Crop Analyzer is the first on-line equipment for quality control completely developed in Argentina. Its innovative scanning sampling system mounted in the Grain Elevation of any Combine allows to obtain full composition report (Moisture, Protein, Fat, Starch and others) and geo-referenced of any grain being harvesting, adding a unique value to the crop field potential analysis.

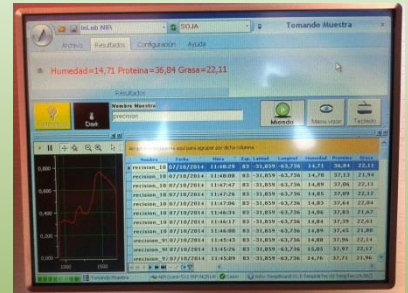




Grain Flow entrance



**On-Line Sensor in the
Combine Grain Elevation**



Geo-referenced results

Spectra Acquisition: by Reflectance

Sample processing: none – On line

Kind of Products: Grains on Harvest

Sample Preparation: None- Automatic Detection, Load and Download - Continuous

Light Source: Tungsten – halogen (6 watts) - 10000 hs Lifetime

Measuring Time: less of 10 seconds

Detector: PDA InGaAs

TEC-NIR device: Separated, Isolated y Thermo Stabilized

Spectral Range: Selectable: 900 a 1700 - 900 a 2100 – others

Spectral Resolution: 3.5 a 4 nm

Dark Signal: Automatic

Communication: USB / Ethernet (RJ45) / VGA

Software: Integrated with graphic Interphase

Screen: 8" Touchscreen industrial Panel PC

Sample ID: Automatic & Geo-Referenced

Historic Data: Excel/TXT Exportable Database

Security: Different Password Levels

Products Memory: Unlimited

Adjustments: Moisture basis, Bias and Slope

Operation Temp: 3°C a 55 °C/**Operation Humidity:** < 85%

Voltage: 12VDC – Direct from battery with Filter

TEC-NIR: W 430 mm – H 200mm – D 370 mm/**Weight:** 5kg

On-Line Sensor: W 200 mm – H 560mm – D 250 mm/**Weight:** 10 kg

Panel PC: W 240 mm – H 180mm – D 120 mm/**Weight:** 2,5 kg